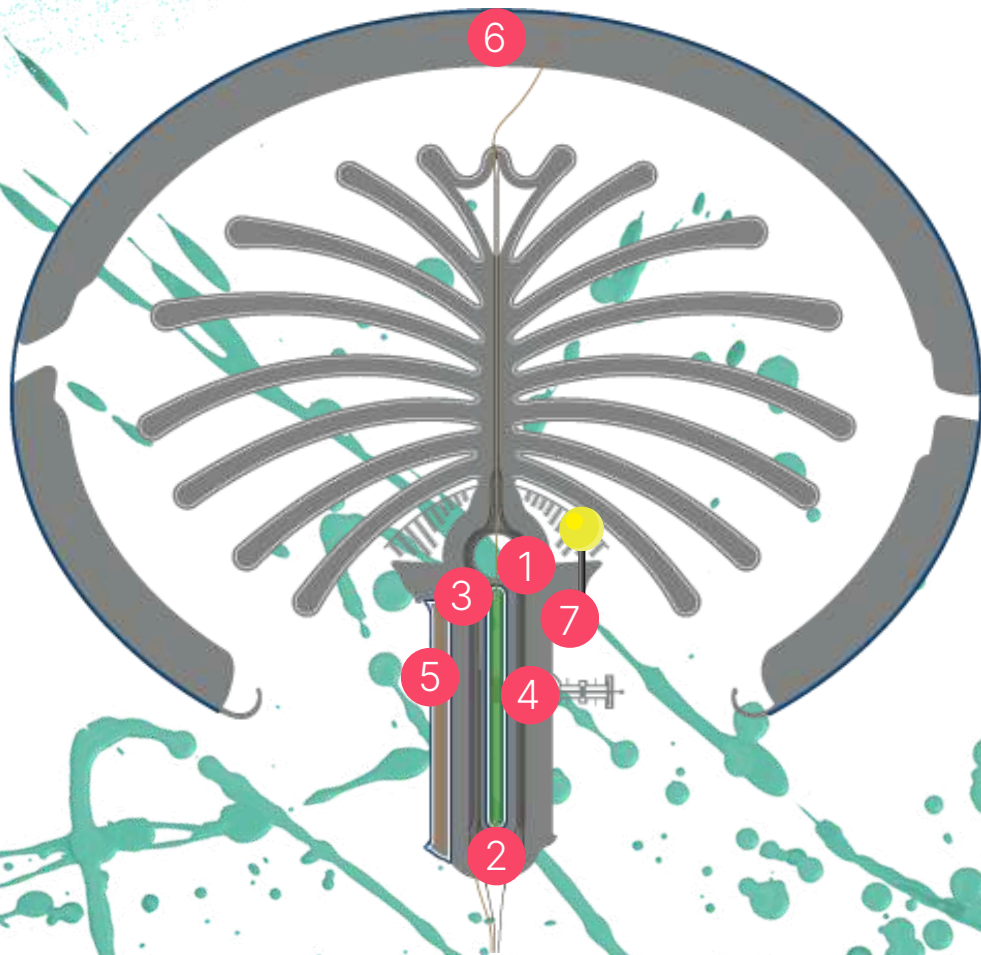




ANDAZ | DUBAI
THE PALM

YOUR ANDAZ DESTINATION, POSITIONED FOR PERFECTION



WE ARE HERE!

On The Palm Jumeirah, Andaz Dubai The Palm sets the bar for bold luxury and unrivaled style.

1

THE VIEW AT THE PALM

A stunning viewing deck offering 360-degree views of Palm Jumeirah

2

THE PALM MONORAIL

A picturesque journey along the length of Palm Jumeirah.

3

NAKHEEL MALL

Retail, dining and entertainment shopping mall.

4

AL ITTIHAD PARK

Pet friendly park with a 2.5km jogging / running track.

5

PALM WEST BEACH

Beachfront strip featuring bars, restaurants and beach clubs.

6

THE LOST CHAMBERS AQUARIUM

Aquarium featuring underwater halls and tunnels filled with marine life.

7

CLUB VISTA MARE

Vibrant dining destination.



MEETINGS & EVENTS SPACES

PLAN LIKE NO ONE'S WATCHING

Andaz Dubai The Palm is your go-to spot for hosting chic social gatherings and corporate events with flair. With five eclectic spaces and 854 square meters of customizable function areas, there is room for every idea to come to life. Plus, the outdoor terrace with stunning views of the Dubai skyline adds that extra touch of magic for unforgettable private events.

VENUE DIMENSIONS AND CAPACITIES



Room Name	Room Dimensions L x W x H	Room Size	Banquet	Reception	Theater	Classroom	Cabaret	Boardroom	U-Shape	Hollow Square	Sofa Seating
ANDAZ STUDIO											
First Floor											
Living Room	13 x 12.8 x 4.7 m	166.0 sqm 1,787.0 sqft	80	100	80	48	56	30	36	48	30
Living Room Terrace	17.5 x 7.9 m	138.3 sqm 1,488.1 sqft	90	140	-	-	-	-	-	-	-
Residence Hall	17.4 x 8.2 x 2.8 m	142.7 sqm 1,535.8 sqft	70	70	55	42	49	24	24	-	22
Studio 1	8.2 x 5.5 x 2.8 m	45.1 sqm 485.5 sqft	18	-	28	24	14	12	18	24	6
Studio 2	8.2 x 6.4 x 2.8 m	52.5 sqm 564.9 sqft	27	-	40	24	14	12	22	30	8
Studio 3	8.2 x 5.5 x 2.8 m	45.1 sqm 485.5 sqft	18	-	28	24	14	12	18	24	6
DOMESTUDIO											
Third Floor											
Dome Center	8.3 x 8.0 x 3.7 m	66.0 sqm 710.3 sqft	54	60	60	30	42	24	28	36	20
Library	8.3 x 4.9 x 3.7 m	40.7 sqm 437.8 sqft	-	-	-	-	-	-	-	-	-
Library Terrace	17.6 x 4.2 x 3.7 m	73.9 sqm 795.7 sqft	-	-	-	-	-	-	-	-	-
Board Room	8.0 x 4.5 x 2.5 m	36.0 sqm 387.5 sqft	-	-	-	-	-	10	-	-	-
TV Room	13.0 x 4.4 x 2.5 m	57.2 sqm 615.7 sqft	-	-	-	-	-	-	-	-	-
Kitchen	16.8 x 4.3 x 2.5 m	71.4 sqm 768.5 sqft	-	-	-	-	-	-	-	-	-
Terrace	8.0 x 7.7 x 3.7 m	61.4 sqm 660.5 sqft	-	50	-	-	-	-	-	-	-



DOMESTUDIO

406 SQ M | CAPACITY 60 GUESTS

The Dome Studio offers a versatile space with two stunning terraces that showcase breathtaking views of Dubai's iconic skyline. Accommodating up to 60 guests, this eclectic venue is bathed in natural light and features multiple collaborative spaces. Whether you are planning a corporate retreat or a social gathering, the Dome Studio provides a unique and customizable setting designed to make your event truly exceptional.



LIVING ROOM & TERRACE

304,3 SQ M | CAPACITY 80 GUESTS

Step into our Living Room & Terrace, where the stunning views of the iconic Burj Al Arab set the stage for truly memorable events. Flooded with natural light, this vibrant space is designed to inspire, complete with an open kitchen for a touch of interactive charm. Whether you are hosting a creative meeting, a chic cocktail party, or a grand celebration, our venue combines style, comfort, and versatility to elevate every occasion. From intimate get-togethers to spectacular soirées, the Living Room & Terrace is the perfect canvas for your next event.

RESIDENCE HALL

142 SQ M | CAPACITY 70 GUESTS

Ignite creativity and collaboration in our Residence Hall, a dynamic space that accommodates up to 70 guests. With the flexibility to divide into three smaller studios, it is ideal for intimate gatherings or breakout sessions. Whether you are organizing a workshop or a networking event, our Residence Hall blends functionality with style to make your experience truly exceptional.



STUDIOS 1, 2 AND 3

45 SQ M | CAPACITY 20 GUESTS

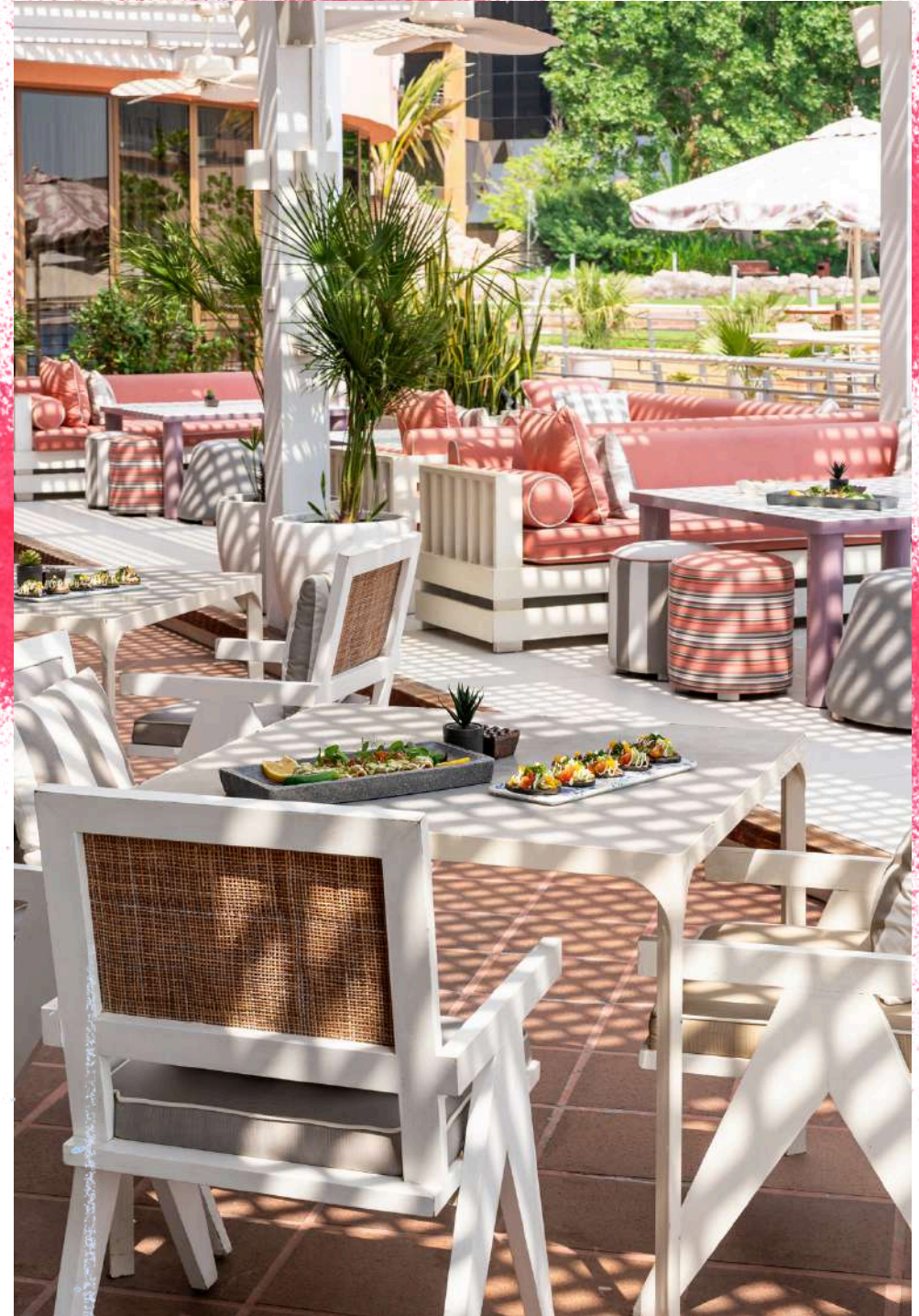
Welcome to our Studios, where intimate meetings blend seamlessly with style. These three versatile spaces can be combined into our Residence Hall or used independently, making them perfect for cozy gatherings or as an extension of our Living Room. Enjoy a smooth, captivating experience from start to finish in an environment designed to impress.



LA COCO

Step into La Coco, our vibrant Mexican retreat where coastal elegance meets city flair. Situated next to the pool and just a stone's throw from the beach, La Coco boasts breathtaking views of the Arabian Gulf and the iconic Burj Al Arab. Imagine hosting your event on our spacious terrace, with the sea breeze and stunning sunsets as your backdrop.

Whether you are planning a sophisticated soirée, a lively fiesta, or an intimate celebration, La Coco's blend of chic ambiance, delectable Mexican flair, and handcrafted cocktails ensures an unforgettable experience. Every detail is curated to make your event truly remarkable.



COFFEE BREAKS



Elevate your coffee breaks from routine to extraordinary. Our culinary artisans handpick each item to invigorate your sessions, ensuring every bite and sip fuels productivity and sparks creativity. Because great meetings deserve great breaks.

Whether you need a jolt during brainstorming or a laid-back moment with gourmet delights, our tailored coffee breaks are designed to fuel your creativity and keep you inspired.



ROOMS & SUITES

ROOMS

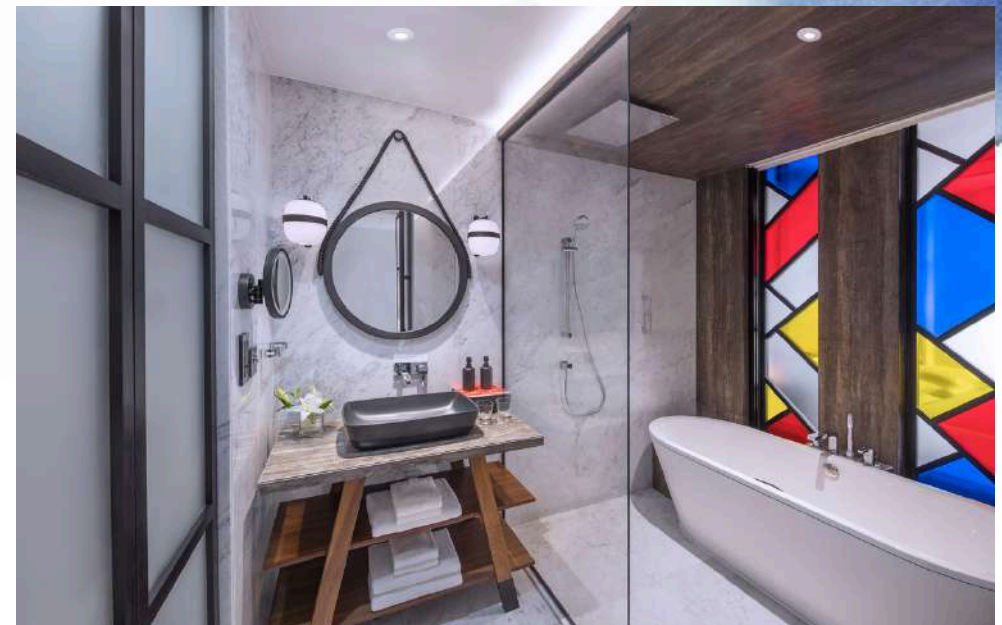
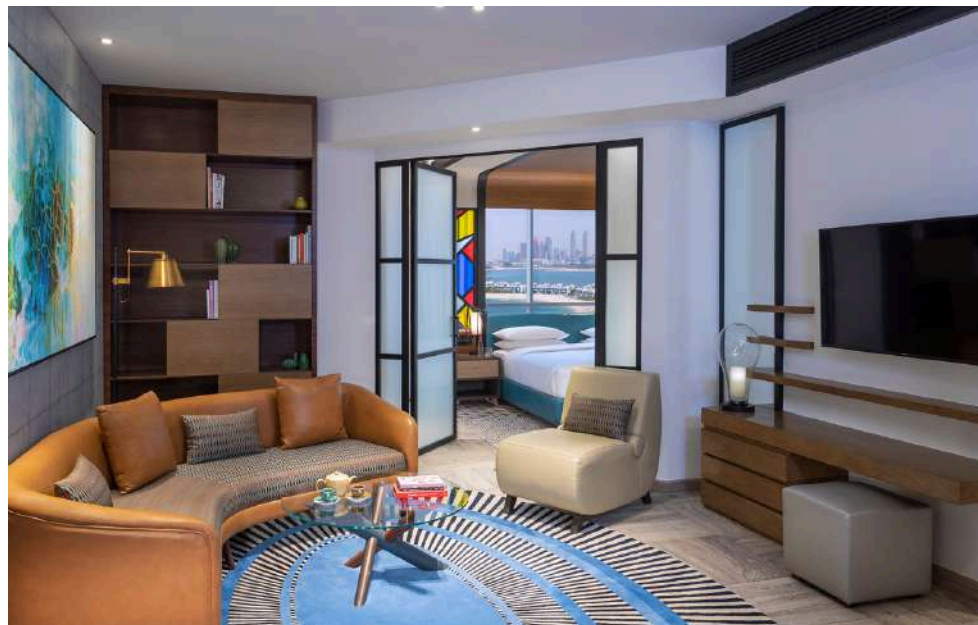
UNWIND IN PURE COMFORT

Our guestrooms are your serene escape, always fresh, clean, and infused with Dubai's unique flair. Each room is thoughtfully designed to reflect the city's vibrant energy. Relax with our sustainable bathroom amenities, enjoy a refreshing mini-bar selection, and savor premium coffee. With every detail covered for your comfort, you will be recharged and ready to dive into your next Dubai adventure.

SUITES

EMBRACE THE WOW

Sink into serenity in our guestrooms and suites, where plush beds and cozy duvets promise restful nights. With a Bluetooth-compatible TV and sound system, plus high-speed Wi-Fi, streaming your favorites is a breeze. Our suites boast stunning Dubai views, spacious living areas, and private balconies—ideal for starting your day of adventure or unwinding after it. Comfort and style await in every corner!





DINING

INDULGE LIKE NO ONE'S WATCHING

Embark on a flavorful journey where indulgence is the norm. Delight in vibrant dishes, decadent desserts, and immersive dining experiences that invite you to savor every moment.

THE LOCALE

YOUR NEIGHBOURHOOD EATERY

All-day Dining, Neighbourhood Eatery, Breakfast & Dinner Buffet, Indoor & Outdoor Seating, Shisha Available, El Boutique Coffee Shop.

LE PETIT CHEF

AN IMMERSIVE DINING EXPERIENCE LIKE NO OTHER

Immersive Dining Experience, Specially Curated Set Menus (kids menu available), Dinner Only, Indoor Seating.



ASIA ASIA, PALM JUMEIRAH

WHERE THE SILK ROAD UNFOLDS ON OUR ROOFTOP

Pan Asian Restaurant, Elevated Dining Experience, 360-degree panoramic rooftop views of Palm Jumeirah, A La Carte Menu, Sunset Brunch.

PLAYERS HOUSE

GAME ON

Underground Bar, Premium Sports Lounge, Grooming Experience, Podcast Studio.



FACILITIES

MOVE LIKE NO ONE'S WATCHING

At Andaz Dubai The Palm, our facilities are designed to elevate your stay with a dash of flair. Push your limits in our state-of-the-art fitness center, indulge in a rejuvenating spa treatment, or dive into the shimmering waters of our infinity pool. Whether you are relaxing in our stylish lounges or savoring a delicious meal, every detail is crafted for your ultimate comfort—where luxury and relaxation blend seamlessly in a vibrant, welcoming atmosphere.

FACILITIES



ELEVATE YOUR WORKOUT

Head to the 14th floor for a gym with breathtaking views. Crush cardio or tackle weights with state-of-the-art machines and the city skyline as your motivator. Open 24/7.

RECHARGE AT ORA SPA

After your workout, relax with a soothing massage and enjoy the sauna, steam room, and whirlpool in our luxurious wet area.

UNWIND AT THE CABANA POOL

Continue your wellness journey at our adult-only cabana pool with vibrant tiles and a perfect playlist for an unbeatable vibe.

RELAX ON THE PRIVATE BEACH

Soak up the sun at our 250-meter private beach. Enjoy sun loungers, umbrellas, and have fresh salads, snacks, and drinks delivered right to your chair.

ANDAZ LOUNGE

Discover a vibrant coworking space where 'work' and 'play' come together. Enjoy chic seating, premium teas, artisanal coffees, and a menu of gourmet dishes and fresh pastries. Ideal for boosting creativity and productivity.





AN*d*AZ™

DUBAI
THE PALM

Andaz Dubai The Palm, Palm Jumeirah, United Arab Emirates
E: AndazDubaiThePalm@andaz.com T: +971 4 581 1234